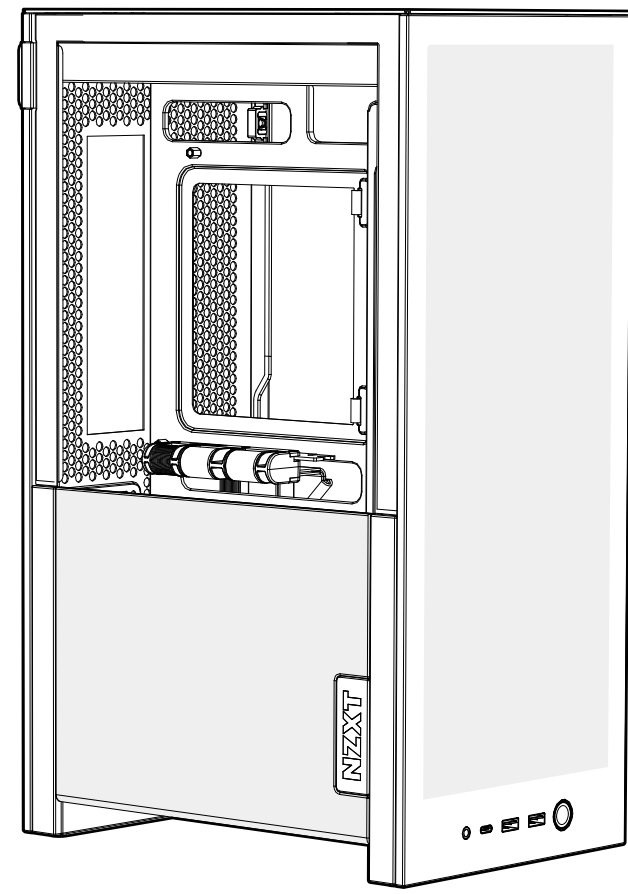


## H2 FLOW

MINI-ITX AIRFLOW CASE



### FRONT

FRONTAL | AVANT | FRONT | ANTERIORE | FRONTAL | 전면 | フロント | 正面

<b>COVER</b>	<b>TABLE OF CONTENTS</b>				
<b>01. EXPLODED VIEW</b>		<b>02. CLEARANCES &amp; SPECIFICATIONS</b>			
<b>03. PANEL REMOVAL</b>	<b>04. ACCESSORY BOX</b>	<b>05. CABLE CONNECTIONS</b>	<b>06. BUTTONS &amp; I/O</b>	<b>07. CABLE MANAGEMENT</b>	

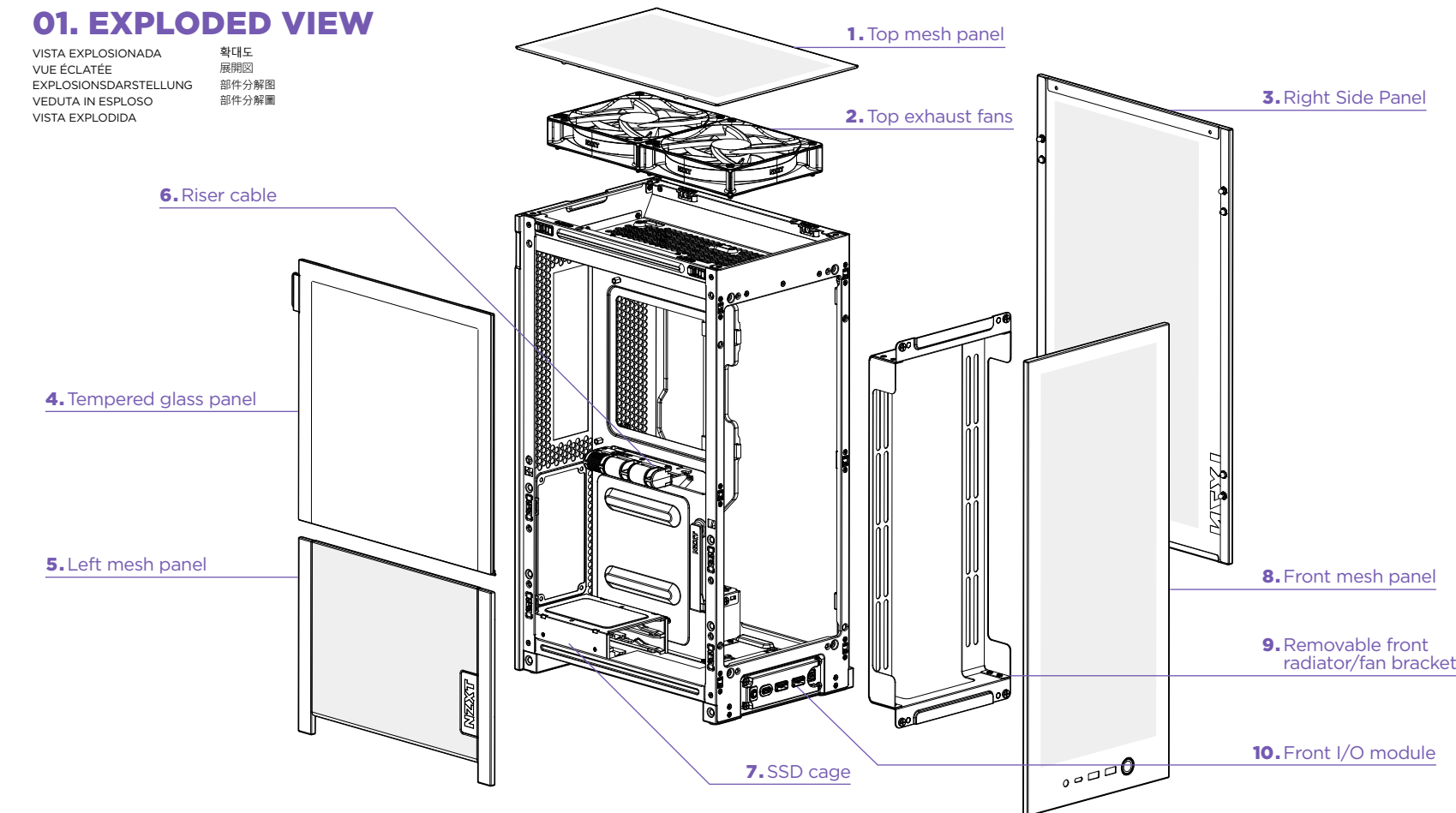
### BACK

ATRÁS | ARRIÈRE | ZURÜCK | INDIETRO | VOLTAR | 뒷면 | 裏面 | 背面

<b>08. MOTHERBOARD INSTALLATION</b>	<b>09. SSD DRIVE INSTALLATION</b>	<b>10. EXPANSION CARD INSTALLATION</b>	<b>11. POWER SUPPLY INSTALLATION</b>	<b>12. FAN &amp; RADIATOR SUPPORT</b>
<b>13. FAN &amp; RADIATOR INSTALLATION</b>				
限用物質及元素列表 限用物質及元素清單	REGULATORY STATEMENT	NZXT GLOBAL WARRANTY POLICY		

### 01. EXPLODED VIEW

VISTA EXPLOSIONADA  
VUE ÉCLATÉE  
EXPLOSIONSDARSTELLUNG  
VEDUTA IN ESPLOSO  
VISTA EXPLODIDA



1. Top mesh panel
2. Top exhaust fans
3. Right side panel
4. Tempered glass panel
5. Left mesh panel
6. Riser cable
7. SSD cage
8. Front mesh panel
9. Removable front radiator/fan bracket
10. Front I/O module

1. Top-Mesh-Panel
2. Obere Abluftlüfter
3. Rechte Blende
4. Linke Hartglasblende
5. Linkes Mesh-Panel
6. Riser-Kabel
7. SSD-Käfig
8. Mesh-Einsatz vorne
9. Abnehmbare Radiator-/Lüfterhalterung vorn
10. E/A-Modul an der Vorderseite

1. 상단 메쉬 패널
2. 상단 배기 팬
3. 우측 사이드 패널
4. 좌측 강화 유리 패널
5. 좌측 메쉬 패널
6. 라이저 케이블
7. SSD 케이지
8. 전면 메쉬 패널
- 9.ถอด착식 전면 라디에이터/팬 브래킷
10. 전면 I/O 모듈

1. 頂部網孔面板
2. 頂部排氣風扇
3. 右側面板
4. 左側鋼化玻璃面板
5. 左側網孔面板
6. 延長線纜
7. SSD 支架
8. 前網板
9. 可拆卸的前置散熱器/風扇支架
10. 前部 I/O 模組

1. Panel superior de rejilla
2. Ventiladores de extracción superiores
3. Panel lateral derecho
4. Panel de cristal templado izquierdo
5. Panel izquierdo de rejilla
6. Cable riser
7. Jaula para SSD
8. Panel de malla frontal
9. Soporte de radiador/ventilador frontal extraíble
10. Módulo de E/S frontal

1. Pannello superiore in mesh
2. Ventole di scarico superiori
3. Pannello laterale destro
4. Pannello laterale sinistro di vetro temperato
5. Pannello sinistro in mesh
6. Cavo riser
7. Gabbia SSD
8. Pannello frontale in rete
9. Radiatore anteriore/staffa ventola amovibile
10. Modulo I/O anteriore

1. トップメッシュパネル
2. トップ排気ファン
3. 右サイドパネル
4. 左側強化ガラスパネル
5. 左側網孔パネル
6. ライザーケーブル
7. SSD ケージ
8. フロントメッシュパネル
9. 取り外し可能なフロントラジエーター/ファンブラケット
10. フロント I/O モジュール

1. 頂部網孔面板
2. 頂部排氣風扇
3. 右側板
4. 左側鋼化玻璃面板
5. 左側網孔面板
6. 延長線纜
7. SSD 支架
8. 前網板
9. 可拆卸的前置散熱器/風扇支架
10. 前方 I/O 模組

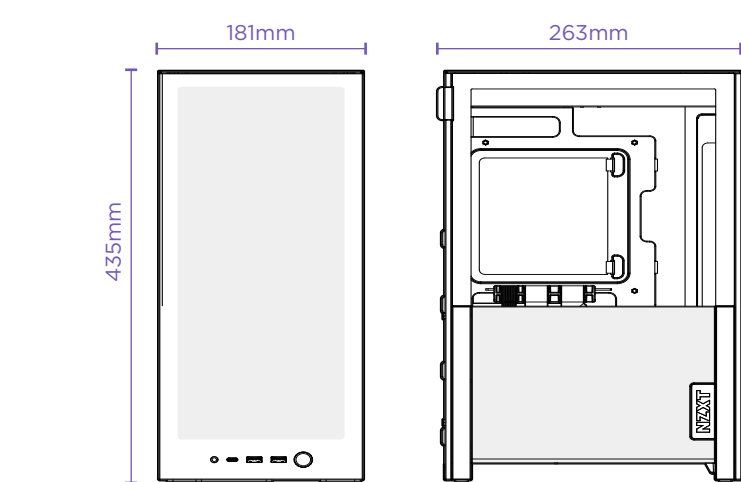
1. Pannneau maillé supérieur
2. Ventilateurs d'extraction supérieurs
3. Pannneau latéral droit
4. Pannneau gauche en verre trempé
5. Pannneau maillé gauche
6. Cable riser
7. Cage SSD
8. Pannneau avant en filet
9. Support de radiateur/ventilateur avant amovible
10. Module avant E/S

1. Painel superior em malha
2. Ventilinhas de exaustão superiores
3. Painel lateral direito
4. Painel esquerdo em vidro temperado
5. Painel esquerdo em malha
6. Cabo riser
7. Gaiola SSD
8. Painel de malha frontal
9. Suporte de ventoinha/radiador frontal removível
10. Módulo E/S frontal

### 02. CLEARANCES & SPECIFICATIONS

MEDIAS Y ESPECIFICACIONES  
DÉTAILS ET SPÉCIFICATIONS  
ABSTANDE UND TECHNISCHE DATEN  
SPAZI NECESSARI E SPECIFICHE  
DIMENSÕES E ESPECIFICAÇÕES

간격과 규격  
空間仕樣  
距離與規格



Motherboard Support	Mini-ITX
2.5" SSD Support	2
Expansion Slots	3
CPU Cooler Height	Up to 75mm
GPU Length	Up to 331mm
GPU Thickness	Up to 65mm
GPU Width	Up to 150mm
PSU Length	Up to 130mm
Front Radiator + Fan Thickness	Up to 60mm

Placas base admitidas	Mini-ITX
Unidad de estado sólido de 2.5"	2
Ranuras de expansión	3
Espacio para refrigerador del procesador	Hasta 75 mm
Longitud de la GPU	Hasta 331 mm
Grosor de la GPU	Hasta 65 mm
Ancho de la GPU	Hasta 150 mm
Longitud de la fuente de alimentación	Hasta 130 mm
Grosor del radiador frontal + ventilador	Hasta 60 mm

Cartes mère prises en charge	Mini-ITX	마더보드 지원	Mini-ITX
SSD 2.5"	2	2.5" SSD	2
Fentes d'expansion	3	확장 슬롯	3
Espace libre au niveau du refroidisseur de processeur	Jusqu'à 75 mm	CPU 쿨러 간격	최대 75mm
Longueur du GPU	Jusqu'à 331 mm	GPU 길이	최대 331mm
Epaisseur du GPU	Jusqu'à 65 mm	GPU 두께	최대 65 mm
Longueur du GPU	Jusqu'à 150 mm	GPU 폭	최대 150 mm
Longueur de l'alimentation	Jusqu'à 130 mm	PSU 길이	최대 130mm
Epaisseur du radiateur + ventilateur	Jusqu'à 60 mm	전면 라디에이터 + 팬 두께	최대 60 mm

Motherboard-Unterstützung	Mini-ITX	마더보드サポート	Mini-ITX
2.5-Zoll-SSD	2	2.5"SSDサポート	2
Erweiterungsschleuplätze	3	EXPANSIONスロット	3
Freiraum für CPU-Kühler	Bis zu 75 mm	CPU 쿨러의クリアランス	最大 75 mm
GPU-Länge	Bis zu 331 mm	GPU長さ	最大331 mm
GPU-Dicke	Bis zu 65 mm	GPU厚さ	最大65 mm
GPU-Breite	Bis zu 150 mm	GPU幅	最大150 mm
Länge des Netzteils	Bis zu 130 mm	PSU 長さ	最大 130 mm
Dicke von Frontkühler + Lüfter	Bis zu 60 mm	フロントラジエーター + ファンの厚さ	最大60 mm

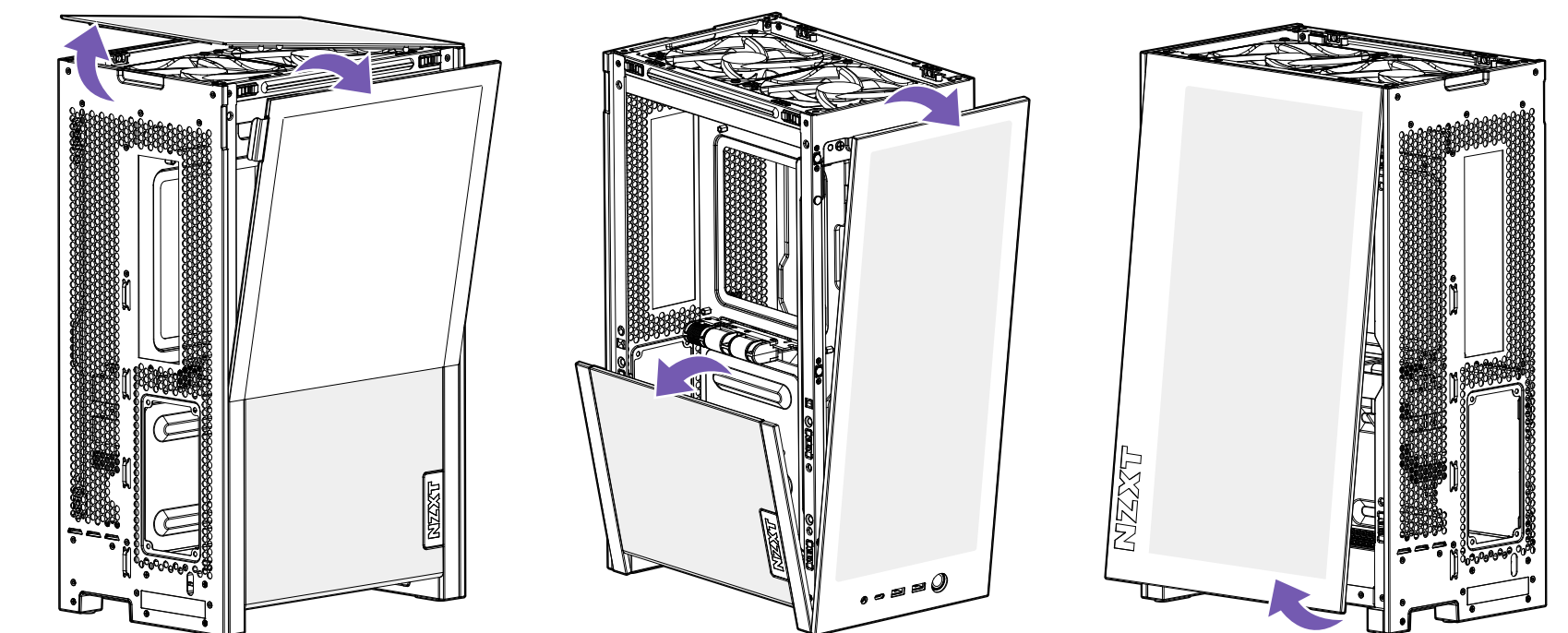
Scheda madre supportata	Mini ITX	主板支持	Mini ITX
SSD 2.5"	2	2.5"SSD支持	2
Alloggi d'espansione	3	扩充槽	3
Ingresso refrigeratore per CPU	Fino a 75 mm	CPU 散热器间距	最大 75mm
Longhezza GPU	Fino a 331 mm	GPU长度	最长331毫米
Spessore GPU	Fino a 65 mm	GPU厚度	最长65毫米
Largezza GPU	Fino a 150 mm	GPU宽度	最长150毫米
Longhezza alimentatore	Fino a 130 mm	PSU 长度	最大 130mm
Spessore radiatore anteriore + ventola	Fino a 60 mm	前置散热 + 风扇厚度	最长60毫米

Placa-principais suportadas	Mini-ITX	主板支援	Mini ITX
SSD de 2.5"	2	2.5"SSD支援	2
Ranuras de expansão	3	擴充槽	3
Espaco necessário para o refrigerador da CPU	Até 75 mm	CPU 散热器间距	最大 75mm
Comprimento da GPU	Até 331 mm	GPU长度	最长331毫米
Espessura da GPU	Até 65 mm	GPU厚度	最长65毫米
Largura da GPU	Até 150 mm	GPU宽度	最长150毫米
Comprimento da fonte de alimentação	Até 130 mm	PSU 长度	最大 130mm
Espessura do radiador frontal + ventoinha	Até 60 mm	前置散热 + 风扇厚度	最长60毫米

### 03. PANEL REMOVAL

EXTRACCIÓN DE PANEL  
RETRAIT DU PANNEAU  
BLÉNDEN ENTFERNEN  
RIMOZIONE DEL PANNELLO  
REMOÇÃO DOS PAINÉIS

패널 제거  
パネルの取り外し  
パネルの取り外し  
移除面板



### 04. ACCESSORY BOX

CAJA DE ACCESORIOS  
BOITE D'ACCESSOIRES  
ZUBEHÖRSET  
SCATOLA DEGLI ACCESSORI  
CAIXA DE ACESSÓRIOS

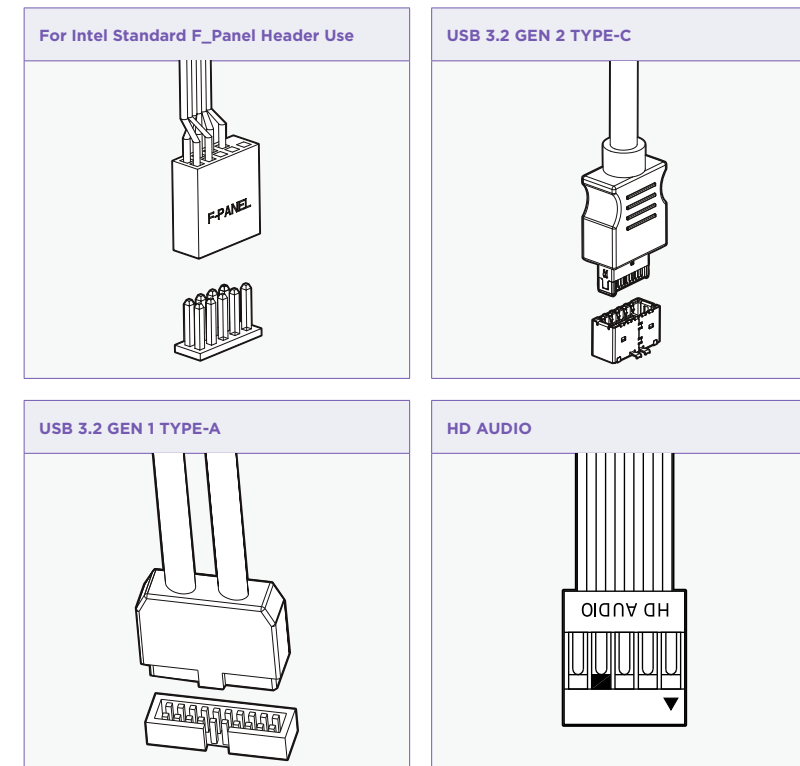
악세서리 박스  
部品箱 (説明書入り)  
配件盒  
零件盒

<b>A</b> #6-32 x 6 mm hex washer head screw for PSU	x4	<b>B</b> #6-32 x 5 mm screw for motherboard	x4
<b>C</b> CB5 x 10 mm screw for fans	x8	<b>D</b> Cable ties	x10

### 05. CABLE CONNECTIONS

DISCO DE ADMINISTRACIÓN DE CABLES  
KABELVERBINDUNGEN  
COLLEGAMENTI DEI CAVI  
LIGAÇÕES DE CABOS

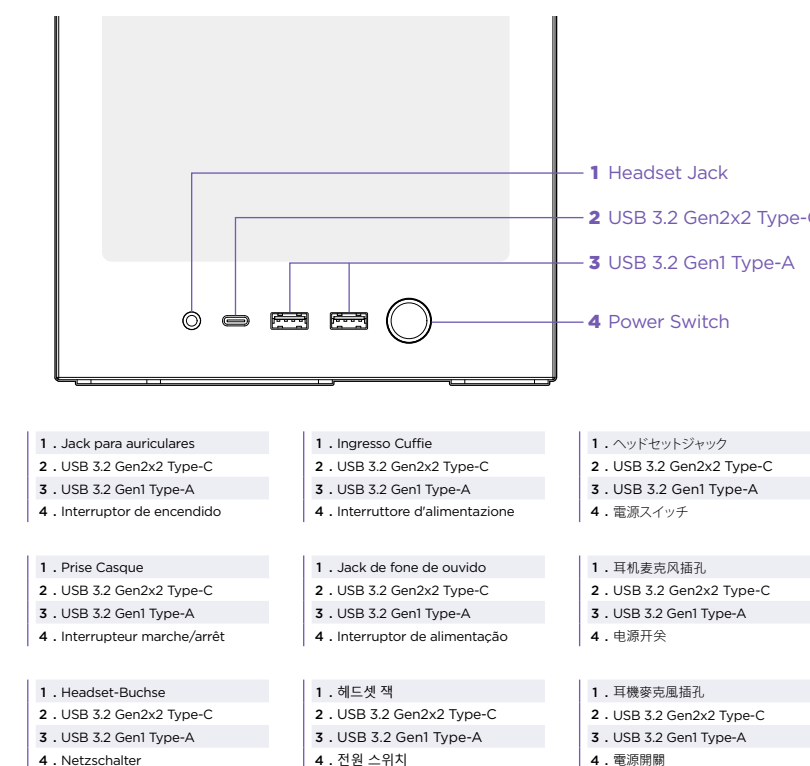
케이블 연결  
ケーブル接続  
線類接続  
線類連接



### 06. BUTTONS & I/O

BOTONES Y E/S  
BOUTONS ET E/S  
TASTEN UND E/A  
PULSANTI E I/O  
BOTÕES E E/S

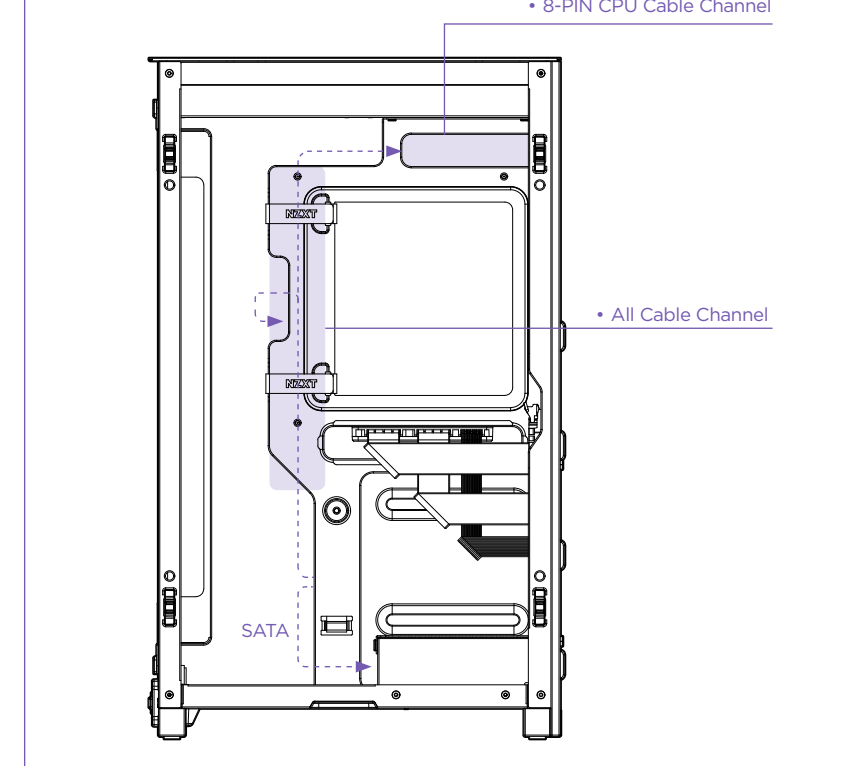
버튼 및 I/O  
ボタンおよび I/O  
按钮和 I/O  
按鈕和 I/O



### 07. CABLE MANAGEMENT

GESTIÓN DE CABLES  
GESTION DES CÂBLES  
KABELMANAGEMENT  
GESTIONE DEI CAVI  
GERENCIAMENTO DE CABOS

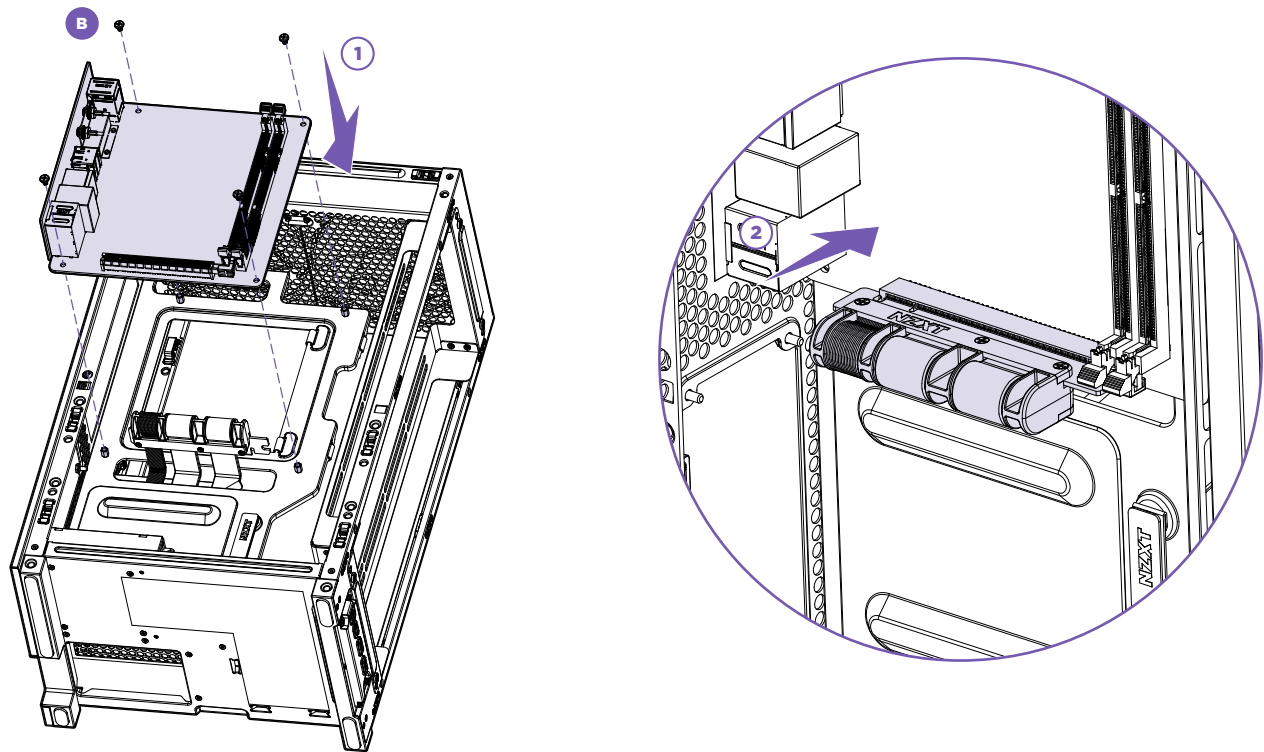
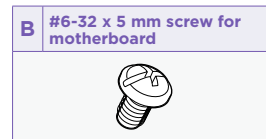
케이블 관리  
ケーブルマネジメント  
線類管理  
線類管理



## 08. MOTHERBOARD INSTALLATION

INSTALACIÓN DE LA PLACA BASE  
 INSTALLATION DE LA CARTE MÈRE  
 INSTALLATION DER HAUPTPLATINE  
 INSTALLAZIONE DELLA SCHEDA MADRE  
 INSTALAÇÃO DA PLACA PRINCIPAL

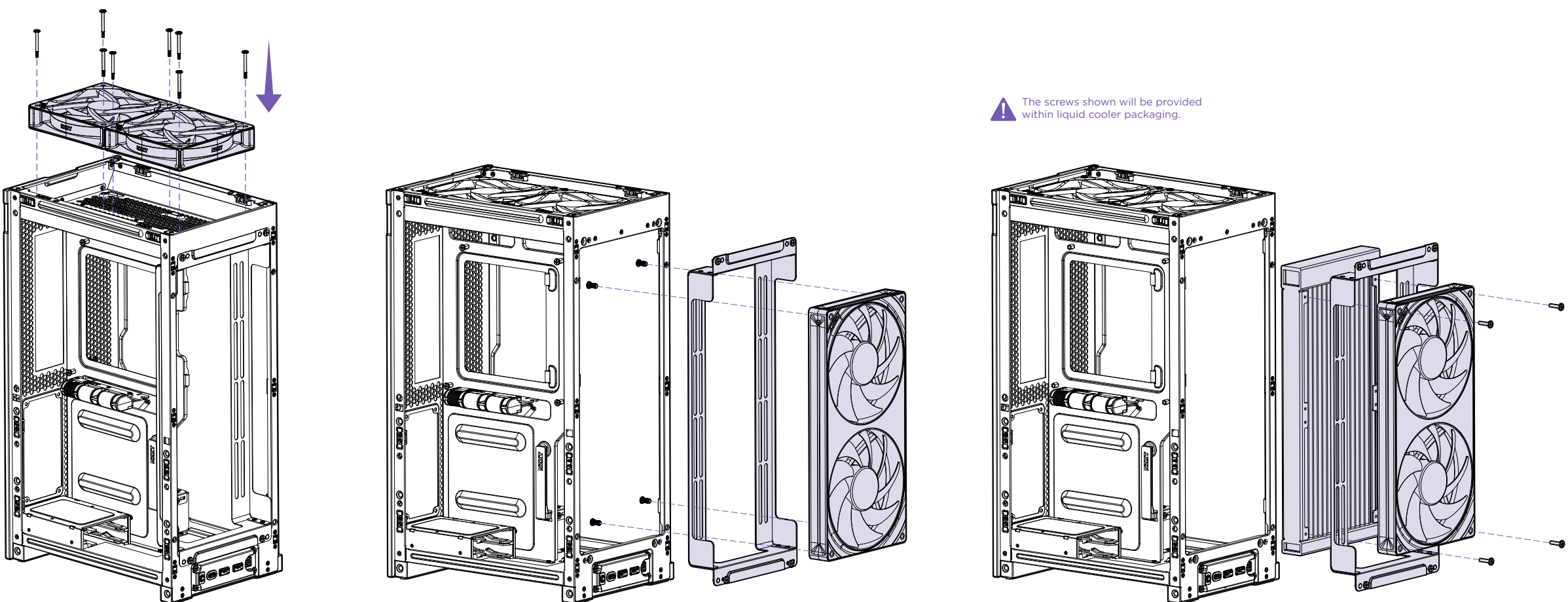
마더보드 설치  
 マザーボードの設置  
 主板安裝  
 主機板安裝



## 13. FAN & RADIATOR INSTALLATION

INSTALACIÓN DE VENTILADORES Y RADIADORES  
 INSTALLATION DES RADIATEURS ET VENTILATEURS  
 LÜFTER- UND KÜHLER-INSTALLATION  
 INSTALLAZIONE VENTOLE E RADIATORE  
 INSTALAÇÃO PARA VENTONHA E A RADIADOR

팬 및 라디에이터 설치  
 ファンとラジエータの取り付け  
 風扇和散熱器安裝  
 風扇和散熱器安裝



The screws shown will be provided within liquid cooler packaging.

## 限用物质及元素列表 / 限用物質及元素清單

產品名稱：機箱、型號（型式）：CA-2405	有害物質及其化學符號						
	鉛(Pb)	鎘(Cd)	汞(Hg)	六价鉻 (Cr <sup>VI</sup> )	多環聯苯 (PBB)	多環聯苯醚 (PBDE)	鄰苯二氯聯苯 (DBP)
機箱	○	○	○	○	○	○	○
螺絲零件	○	○	○	○	○	○	○
五金	○	○	○	○	○	○	○
外殼	○	○	○	○	○	○	○
螺絲	○	○	○	○	○	○	○

本表格係按SJ/T 11364的規定編制。  
 ○ 表示該有害物質在該部件所有物料材料中的含量均在GB/T 26572規定的限量要求之下。  
 △ 表示該有害物質在該部件所有物料材料中的含量超出GB/T 26572規定的限量要求,然該部件仍可符合歐盟RoHS 2011/65/EU的規定。

產品名稱：機箱、型號（型式）：CA-2405	限用物質及其化學符號				
	鉛(Pb)	鎘(Cd)	汞(Hg)	六價鉻(Cr <sup>VI</sup> )	多環聯苯(PBB)
機箱	○	○	○	○	○
螺絲零件	○	○	○	○	○
五金	○	○	○	○	○
外殼	○	○	○	○	○
螺絲	○	○	○	○	○

備註1：“超出0.1wt%”及“超出0.01wt%”係指限用物質之百分比含量超出百分比含量標準值。  
 備註2：“○”係指該限用物質之百分比含量未超出百分比含量標準值。  
 備註3：“△”係指該限用物質為豁免項目。

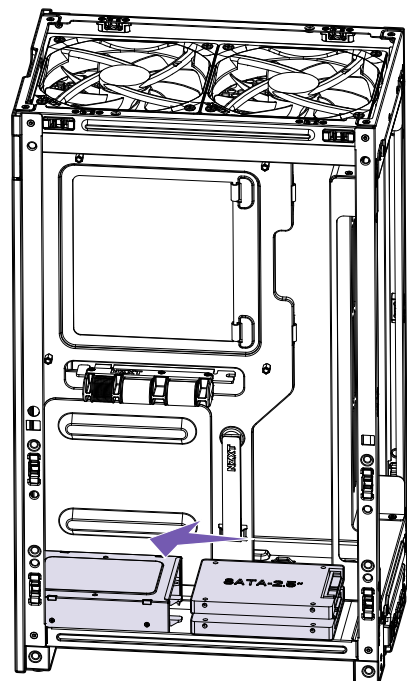
Equipment Name: PC Case I	Type Designation (Type): CA-2405	Restricted substances and its chemical symbols				
		Lead (Pb)	Mercury (Hg)	Cadmium (Cd)	Hexavalent chromium (Cr+6)	Polybrominated diphenyl ethers (PBB)
Case		○	○	○	○	○
Cable		○	○	○	○	○
Glass		○	○	○	○	○
Screw		○	○	○	○	○
Plastic component		○	○	○	○	○

Remark: 1. "Exceeding 0.1 wt%" and "Exceeding 0.01 wt%" indicate that the concentration of the restricted substance exceeds the specified threshold percentage.  
 2. "○" indicates that the concentration of the restricted substance does not exceed the specified threshold percentage.  
 3. "△" indicates that the restricted substance is exempted.

## 09. SSD DRIVE INSTALLATION

INSTALACIÓN DE LA UNIDAD DE DISCO DE ESTADO SÓLIDO  
 INSTALLATION DU DISQUE SSD  
 SSD-LAUFWERKUNSTALLATION  
 INSTALLAZIONE DELL'UNITÀ SSD  
 INSTALAÇÃO DA PLACA DE EXPANSÃO

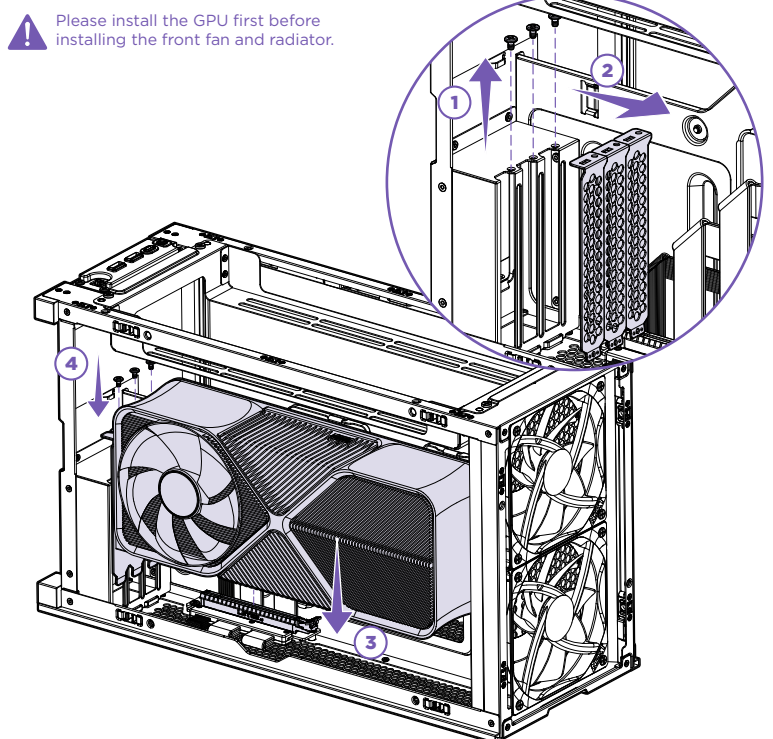
SSD 드라이브 설치  
 SSD 裝機  
 SSD 驅動器安裝  
 SSD 安裝



## 10. EXPANSION CARD INSTALLATION

INSTALACIÓN DE LA TARJETA DE EXPANSIÓN  
 INSTALLATION DE LA CARTE D'EXTENSION  
 INSTALLATION DER ERWEITERUNGSKARTE  
 INSTALLAZIONE DELLA SCHEDE D'ESPANSIONE  
 INSTALAÇÃO DA PLACA DE EXPANSÃO

확장 카드 설치  
 拡張カードの設置  
 擴充卡安裝  
 擴充卡安裝



Please install the GPU first before installing the front fan and radiator.

## REGULATORY STATEMENT

**UYUM BEYANI**  
 Ayrıç. Korsey Yönergeleri ile ilgili Birlik üyru mevzuatında belirtilen şartlara uygundur:  
 • EMC Yönergesi 2014/30/EU  
 • RoHS Yönergesi 2011/65/EU & (EU) 2015/863

**OVĚŘENÍ STAVBY O VĚŘENÍ**  
 Erhæden er i overensstemmelse med kravene i Rådets direktiv relevant til EU's lovgivning om harmonisering:  
 • EMC-direktiv 2014/30/EU  
 • RoHS-direktiv 2011/65/EU og (EU) 2015/863

**VAATIMUSTENMUKAISUUSVAKUUTUS**  
 Laite on Euroopan neuvoston olemassa olevien unionin harmonisointisääntöjen vaatimusten mukainen:  
 • EMC-direktiivi 2014/30/EU  
 • RoHS-direktiivi 2011/65/EU & (EU) 2015/863

**SAHVISEKILVERING**  
 Erhæten overholder kravene i EU-rådets harmoniseringsdirektiver:  
 • EMC-direktiv 2014/30/EU  
 • RoHS-direktiv 2011/65/EU & (EU) 2015/863

**KONFORMITÄTSDEKLARATION**  
 Erhæten oppfyller kravene som angies i Rådets direktiv relevanta harmoniseringsföreskrifter for Europeiska unionen:  
 • EMC-direktiv 2014/30/EU  
 • RoHS-direktiv 2011/65/EU & (EU) 2015/863

**DECLARATIE DE CONFORMITATE**  
 Dispozitivul respectă cerințele menționate în Directiva Consiliului și în legislația armonizată relevantă la nivelul Uniunii:  
 • Directive EMC 2014/30/EU  
 • Directive RoHS 2011/65/UE și (UE) 2015/863

**DECLARAZIONE DI CONFORMITÀ**  
 Il dispositivo è conforme con i requisiti definiti nelle Direttive del Consiglio relative alla Norma sull'armonizzazione dell'Unione:  
 • Direttiva EMC 2014/30/UE  
 • Direttiva RoHS 2011/65/UE e (UE) 2015/863

**DECLARACIÓN DE CONFORMIDAD**  
 O dispositivo está conforme aos requisitos das Directivas do Consello e relevante legislação de harmonización da Unión Europea:  
 • Directiva EMC 2014/30/UE  
 • Directiva RoHS 2011/65/UE e (UE) 2015/863

## PROHLÁŠENÍ O SHODĚ

Zařízení odpovídá požadavkům stanoveným ve směrnici Rady podle příslušných harmonizačních právních předpisů Unie:  
 • Směrnice o elektromagnetické kompatibilitě 2014/30/EU  
 • Směrnice o RoHS 2011/65/EU a (EU) 2015/863

**MEGFELŐLÉSGI NYILATKOZAT**  
 Az eszköz megfelel a Tanács irányelvek releváns uniós harmonizációs rendelkezésének által felraltott követelményeknek:  
 • 2014/30/EU EMC-irányelv  
 • 2011/65/EU és (EU) 2015/863 RoHS-irányelv

**DECLARAȚIA SA CĂTOTĂȘTEȘTE**  
 Utilizarea produsului este în conformitate cu cerințele din legislația armonizată relevantă la nivelul Uniunii:  
 • EMC-direcțiva 2014/30/EC  
 • RoHS-direcțiva 2011/65/UE & (EU) 2015/863

**DECLARACIJA O USKLADNOSTI**  
 Ova uređaja ispunjava zahtjeve prema postavljenim u direktivama Vijeća vezanim uz relevantne harmonizacijske zakone Unije:  
 • EMC Direktiva 2014/30/EU  
 • RoHS Direktiva 2011/65/EU & (EU) 2015/863

**ΔΗΛΩΣΗ ΣΥΜΜΟΡΦΩΣΗΣ**  
 Η συσκευή συμμορφώνεται με τις απαιτήσεις που καθορίζονται στις Οδηγίες του Ευρωπαϊκού Συμβουλίου σχετικά με την αρμόνιση των προϊόντων στην αγορά της Ένωσης:  
 • Οδηγία περί ΗΜΕ 2014/30/ΕΕ  
 • Οδηγία περί RoHS 2011/65/ΕΕ & (ΕΕ) 2015/863

**DECLARAZIONE DI CONFORMITÀ**  
 Das Gerät entspricht allen Anforderungen der entsprechenden EU-Harmonisierungsrichtlinien des Rates:  
 • EMV-Richtlinie 2014/30/EU  
 • RoHS-Richtlinie 2011/65/EU & (EU) 2015/863

**DECLARAZIONE DI CONFORMITÀ**  
 O dispositivo é conforme com os requisitos das Diretivas do Conselho e legislação de harmonização da União Europeia:  
 • Diretiva EMC 2014/30/UE  
 • Diretiva RoHS 2011/65/UE e (UE) 2015/863

**DECLARAZIONE DI CONFORMITÀ**  
 O dispositivo está conforme aos requisitos das Diretivas do Conselho e relevante legislação de harmonização da União Europeia:  
 • Diretiva EMC 2014/30/UE  
 • Diretiva RoHS 2011/65/UE e (UE) 2015/863

## NZXT GLOBAL WARRANTY POLICY

This NZXT Global Warranty Policy governs the sale of products by NZXT to you.

I. WARRANTY LENGTH	Warranty Length for Parts
Computer Cases	2 Years

Any replacement product will be covered under warranty for the remainder of the warranty period or thirty days, whichever is longer. Proof of purchase is required for warranty service.

**II. WHO IS PROTECTED**  
 The Warranty covers only NZXT products purchased by the original consumer.

**III. WHAT IS AND IS NOT COVERED**  
 Please note that our warranty is not an unconditional guarantee. If the product, in NZXT's reasonable opinion, malfunctions within the warranty period, NZXT will provide you at its sole discretion with a repaired or replacement product, either new or refurbished, with a similar function that is equal or greater in value depending on supply. Our warranty does not cover the following:

- any product or serial number/warranty sticker modification applied without permission from NZXT;
- any damage that is not a manufacturing defect;
- damage, deterioration or malfunction resulting from: accident, abuse, misuse, neglect, fire, water, lightning, or other acts of nature, unauthorized product modification or failure to follow instructions included with the product;
- improper installation, unauthorized alterations or modifications, or repair or attempted repair by anyone not authorized by NZXT;
- shipping or transport damage (claims must be made with the carrier);
- normal wear and tear.

NZXT does not warrant that this product will meet your requirements. It is your responsibility to determine the suitability of this product for your purpose. For NZXT Store orders, we cover two way return shipping for all exchanges and returns. For all other authorized dealers, NZXT Support does not cover return shipping and only covers one way shipping from NZXT back to the end user for exchanges. Two way expedited shipping is provided for all PSUs covered under the Less Than Three year period, indiscriminate of purchase location, provided the location is an approved NZXT reseller.

**IV. EXCLUSION OF DAMAGES (DISCLAIMER)**  
 NZXT's sole obligation and liability under this warranty is limited to the repair or replacement of a defective product with either a new or refurbished product with a similar function that is equal or greater in value at our option. NZXT shall not, in any event, be liable for any incidental or consequential damage, including but not limited to damages resulting from interruption of service and loss of data, business, or for liability in tort relating to this product or resulting from its use or possession.

**V. LIMITATIONS OF IMPLIED WARRANTIES**  
 There are no other warranties, expressed or implied, including but not limited to those of merchantability or fitness for a particular purpose. The duration of implied warranties is limited to the warranty length specified in Paragraph I.

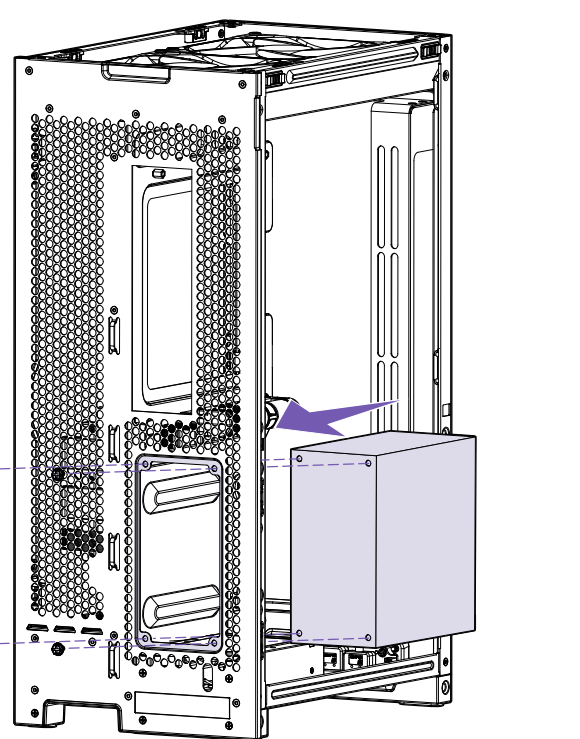
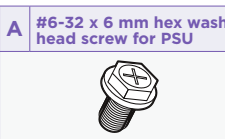
**VI. TO OBTAIN TECHNICAL SUPPORT**  
 If you have already referenced your product owner's manual and still need help, you may contact us by phone at +1 (800) 228-9396, by email at [support@nzxt.com](mailto:support@nzxt.com), or visit the NZXT Support site at [nzxt.com/customer-support](http://nzxt.com/customer-support).

**VII. HOW TO OBTAIN A WARRANTY SERVICE FROM NZXT**  
 To receive a warranty service for your product when purchased directly from NZXT, you must submit a request via the NZXT Support site outlining the problem. If a technician deems the product defective or requiring testing, you will be required

## 11. POWER SUPPLY INSTALLATION

INSTALACIÓN DE LA FUENTE DE ALIMENTACIÓN  
 INSTALLATION DE L'ALIMENTATION  
 INSTALLATION DER STROMVERSORGUNG  
 INSTALLAZIONE DELL'ALIMENTATORE  
 INSTALAÇÃO DA FONTE DE ALIMENTAÇÃO

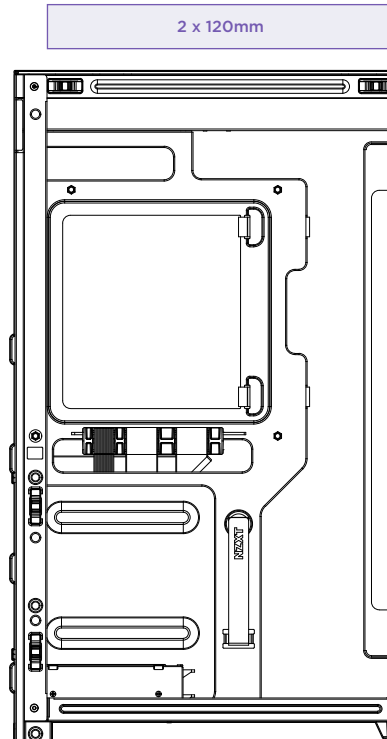
전원공급장치 설치  
 電源の設置  
 電源安裝  
 電源安裝



## 12. FAN & RADIATOR SUPPORT

COMPATIBILIDAD DE VENTILADORES Y RADIADORES  
 PRISE EN CHARGE DES RADIATEURS ET VENTILATEURS  
 LÜFTER- UND KÜHLER-UNTERSTÜTZUNG  
 SUPPORTO VENTOLE E RADIATORE  
 SUPORTE PARA VENTONHA E A RADIADOR

팬 및 라디에이터 지원  
 対応ファンおよびラジエータ  
 風扇和散熱器支持  
 風扇和散熱器支援



to provide a copy of your proof of purchase, which will enable you to submit a Return Merchandise Authorization "RMA" request.

Once approved, you'll receive an RMA number, upon which you will be asked to ship the defective item back to NZXT with the RMA number clearly marked or labelled on the package. NZXT recommends that appropriate measures are taken to safeguard the product from damage during shipping.

**VIII. APPLICABLE LAW AND ADDITIONAL LEGAL RIGHTS FOR CONSUMERS**  
 This warranty gives you specific legal rights. These conditions are governed and construed in accordance with the laws of California (with exception of its conflict of law provisions), and the application of the United Nations Convention of Contracts for the International Sale of Goods is expressly excluded. The non-exclusive jurisdiction of the courts of California is agreed, which means that you may bring a claim to enforce your consumer protection rights in connection with this Global Warranty in the country which you have your habitual residence where you may have additional rights. These rights may vary.

For original consumers who are covered by consumer protection laws or regulations in their country, state, or province of purchase or, if different, their country, state, or province of residence, the benefits conferred by this warranty are in addition to all rights and remedies conveyed by such consumer protection laws and regulations. To the extent that liability under such consumer laws can be limited, NZXT's liability is limited, and its sole option, to repair or replacement, either new or refurbished, with a similar function that is equal or greater in value depending on supply.

**In the United Kingdom:**  
 For NZXT products sold to customers in the UK, during the expected lifespan of your product your legal rights entitle you to the following:

- > Up to 30 days: if your goods are faulty, then you can get an immediate refund.
- > Up to six months: if your goods can't be repaired or replaced, then you're entitled to a full refund, in most cases.
- > Up to six years: if your goods do not last a reasonable length of time you may be entitled to some money back.

**In Europe:**  
 Within the first year after purchase, please return your product (or for power supplies installed within our enclosures, just the failed power supply) to your dealer or reseller for a replacement. If the product is still within warranty and you can no longer return it to your dealer, please contact NZXT Customer Support (see above) for assistance and instructions. NZXT will not accept returns without prior approval.

**In North America:**  
 Within the first 60 days after purchase, please return your product (or for power supplies installed within our enclosures, just the failed power supply) to your dealer or reseller for a replacement. If the product is still within warranty and you can no longer return it to your dealer, please contact NZXT Customer Support (see above) for assistance and instructions. NZXT will not accept returns without prior approval.

**In Australia:**  
 Within the first two years after purchase, please return your product (or for power supplies installed within our enclosures, just the failed power supply) to your dealer or reseller for a replacement. If the product is still within warranty and you can no longer return it to your dealer, please contact NZXT Customer Support (see above) for assistance and instructions. NZXT will not accept returns without prior approval.

**In Europe:**  
 Within the first year after purchase, please return your product (or for power supplies installed within our enclosures, just the failed power supply) to your dealer or reseller for a replacement. If the product is still within warranty and you can no longer return it to your dealer, please contact NZXT Customer Support (see above) for assistance and instructions. NZXT will not accept returns without prior approval.

**In North America:**  
 Within the first 60 days after purchase, please return your product (or for power supplies installed within our enclosures, just the failed power supply) to your dealer or reseller for a replacement. If the product is still within warranty and you can no longer return it to your dealer, please contact NZXT Customer Support (see above) for assistance and instructions. NZXT will not accept returns without prior approval.

**In Australia:**  
 Within the first two years after purchase, please return your product (or for power supplies installed within our enclosures, just the failed power supply) to your dealer or reseller for a replacement. If the product is still within warranty and you can no longer return it to your dealer, please contact NZXT Customer Support (see above) for assistance and instructions. NZXT will not accept returns without prior approval.

longer return it to your dealer, please contact NZXT Customer Support (see above) for assistance and instructions. NZXT will not accept returns without prior approval.

The cost of shipping will be borne at the first instance by you; however, if the purchased item is defective, NZXT will reimburse reasonable postage or transportation of costs.

**Outside North America, Europe, and Australia:**  
 If your product needs to be returned within the warranty period, please contact the retailer or distributor from whom you purchased the product.

**X. NZXT.COM STORE RETURNS/EXCHANGE POLICY**  
 Eligible products under this NZXT Warranty qualify for a full refund or exchange only with an authorized RMA number and if the item is returned to the NZXT.com store inventory within 30 days of purchase. Returns are not allowed beyond 30 days of the purchase date. The NZXT.com Store reserves the right to deny any return or exchange. Refunds will be credited to the original method of payment. To initiate a return, simply submit a request via NZXT support site.

> Visit [nzxt.com/warranty](http://nzxt.com/warranty) and [support.nzxt.com](http://support.nzxt.com) for information on warranty coverage and service.  
 > Visite el sitio Web [nzxt.com/warranty](http://nzxt.com/warranty) y [support.nzxt.com](http://support.nzxt.com) para obtener información sobre la cobertura y el servicio de la garantía.

> Visitez [nzxt.com/warranty](http://nzxt.com/warranty) et [support.nzxt.com](http://support.nzxt.com) pour les informations de la couverture de la garantie et du service.  
 > Informationen zu Geltungsbereich und Service der Garantie finden Sie unter [support.nzxt.com](http://support.nzxt.com) und [nzxt.com/warranty](http://nzxt.com/warranty).

> Visitare il sito [nzxt.com/warranty](http://nzxt.com/warranty) e [support.nzxt.com](http://support.nzxt.com) per informazioni sulla copertura e sul servizio della garanzia.  
 > Visitez [nzxt.com/warranty](http://nzxt.com/warranty) e [support.nzxt.com](http://support.nzxt.com) para obter informações sobre a cobertura da garantia e assistência.

> 제품 보증 범위와 서비스 정보를 확인하려면 [nzxt.com/warranty](http://nzxt.com/warranty) 또는 [support.nzxt.com](http://support.nzxt.com) 을 방문해 주시기 바랍니다.  
 > 保証範囲およびサービスに関する情報は [nzxt.com/warranty](http://nzxt.com/warranty) と [support.nzxt.com](http://support.nzxt.com) をアクセスしてください。

> 請洽 [nzxt.com/warranty](http://nzxt.com/warranty) 和 [support.nzxt.com](http://support.nzxt.com) 了解產品保固範圍和服務訊息。  
 > 請洽 [nzxt.com/warranty](http://nzxt.com/warranty) 和 [support.nzxt.com](http://support.nzxt.com) 了解產品保固範圍和更多服務訊息。

**In the EU:**  
 If you are a consumer and have your habitual residence in the EU, you additionally enjoy the protection afforded to you by provisions that cannot be derogated from by agreement by virtue of the law where you have your habitual residence.

**IX. WARRANTY SERVICE FROM RESELLERS**  
 In the event that a warranty service is sought, you must provide proof of purchase (store receipt or invoice) in order to receive the service and if deemed necessary, repair or replacement product.

**In North America:**  
 In the event that a warranty service is sought, you must provide proof of purchase (store receipt or invoice) in order to receive the service and if deemed necessary, repair or replacement product.

**In Australia:**  
 In the event that a warranty service is sought, you must provide proof of purchase (store receipt or invoice) in order to receive the service and if deemed necessary, repair or replacement product.

**In Europe:**  
 In the event that a warranty service is sought, you must provide proof of purchase (store receipt or invoice) in order to receive the service and if deemed necessary, repair or replacement product.

**In North America:**  
 In the event that a warranty service is sought, you must provide proof of purchase (store receipt or invoice) in order to receive the service and if deemed necessary, repair or replacement product.

**In Australia:**  
 In the event that a warranty service is sought, you must provide proof of purchase (store receipt or invoice) in order to receive the service and if deemed necessary, repair or replacement product.

**NZXT, Inc.** | 605 E Huntington Drive, Suite 213, Monrovia, CA 91016, US  
**NZXT Europe GmbH** | Messe München, Kronstadter Str. 4, Munich, 81677, DE  
**NZXT UK Ltd.** | First Floor, 5 Fleet Place, London, EC4M 7RD, GB  
 +1 (800) 228-9395 / [service@nzxt.com](mailto:service@nzxt.com) / [nzxt.com](http://nzxt.com)